

Tips for *Answers*

- 1 Observe on your right, this bust under the Genoise at 7 cours Leydet, placed here by the former owner, what does it represent?



A = A woman's head, and more precisely that of the Marianne.
B = An owl head to chase away bad energy.
C = An elephant's head, the demigod Ganesh protector.

- 2 This orientation table indicates the name and the altitude of each summit, but do you know at what altitude Fuveau is located? It is mentioned on this table...



F = 301 meters
G = 322 meters
H = 331 meters

- 3 Find this inscription on the façade of the church (see photo). The right letter to find is the first letter of the fourth word.



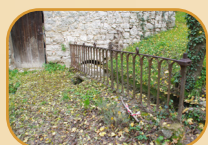
- 4 This picture gives you the answer, look at this place carefully!



- 5 The answer can be found on the plaque on the front of the chapel.



- 6 Look at the metal railing on the platform of the wash house (see photo). How many rungs can you see?



C = 18
D = 20
E = 27

- 7 Look at the top of the façade of the town hall. What can you see?



K = A sundial
L = A clock
M = The coat of arms of Fuveau

- 8 What is the name of this street?

S = Rue du château d'eau
T = Rue des corons
U = Rue du château vert

- 9 Nearby, a small orienteering course for children welcomes you. Find the cat's marker, punch it in the box opposite, which design appears?



- 10 The present altar was in another place of worship, which one? A plaque on the wall gives you the answer.



P = Saint Roch's chapel
I = The Saint-Jean-de-Mélessane chapel
S = Saint Michel Church

Rules of the game

In order to solve the puzzle (on the first page), 10 clues are proposed. Each response completes the "clues" numbered from 1 to 10. Regardless of the order in which the clues are solved, each response must be in the correct box (example: Index 5, Box 5). Some clues are associated with places on the map (numbered circles). Going to these places, an element architectural, landscape... allow you to respond. For some clues, aids (opposite) lead to the solution.

Legend

Road - Small path - Less distinct small path	
Tunnel - Fence (passable, impassable)	
Crossing point - Wall (passable, impassable)	
Bridge - Uncrossable cliff - Bare rock	
Boulder - Cave - Small crossable watercourse	
Intermittent stream - Pond - Fountain	
Land forms	
Direction of the slope	
Main - Normal - intermediary	
Earth bank - Small earth wall - Small erosion gully	
Small depression - Small knoll - Prominent tree (small, large)	
Building (passable, impassable) - Step	
Man-made features - Monument - Pillar	
Distinct vegetation boundary - Prominent vegetation feature	
Pavea area - Forbidden area - Orchard	
Hurdle - Open land - Open land with scattered trees/brushes	
Deforested wasteland - Wasteland, scattered trees	
Forest : Easy running - Slow running	
Forest : Tough race - Uncrossable vegetation	

Characteristics of the course

Distance
3km
Estimated time
1 hour
difficulty level
Beginner



for more information :
contact@fuveau-tourisme.com
 04 42 50 49 77

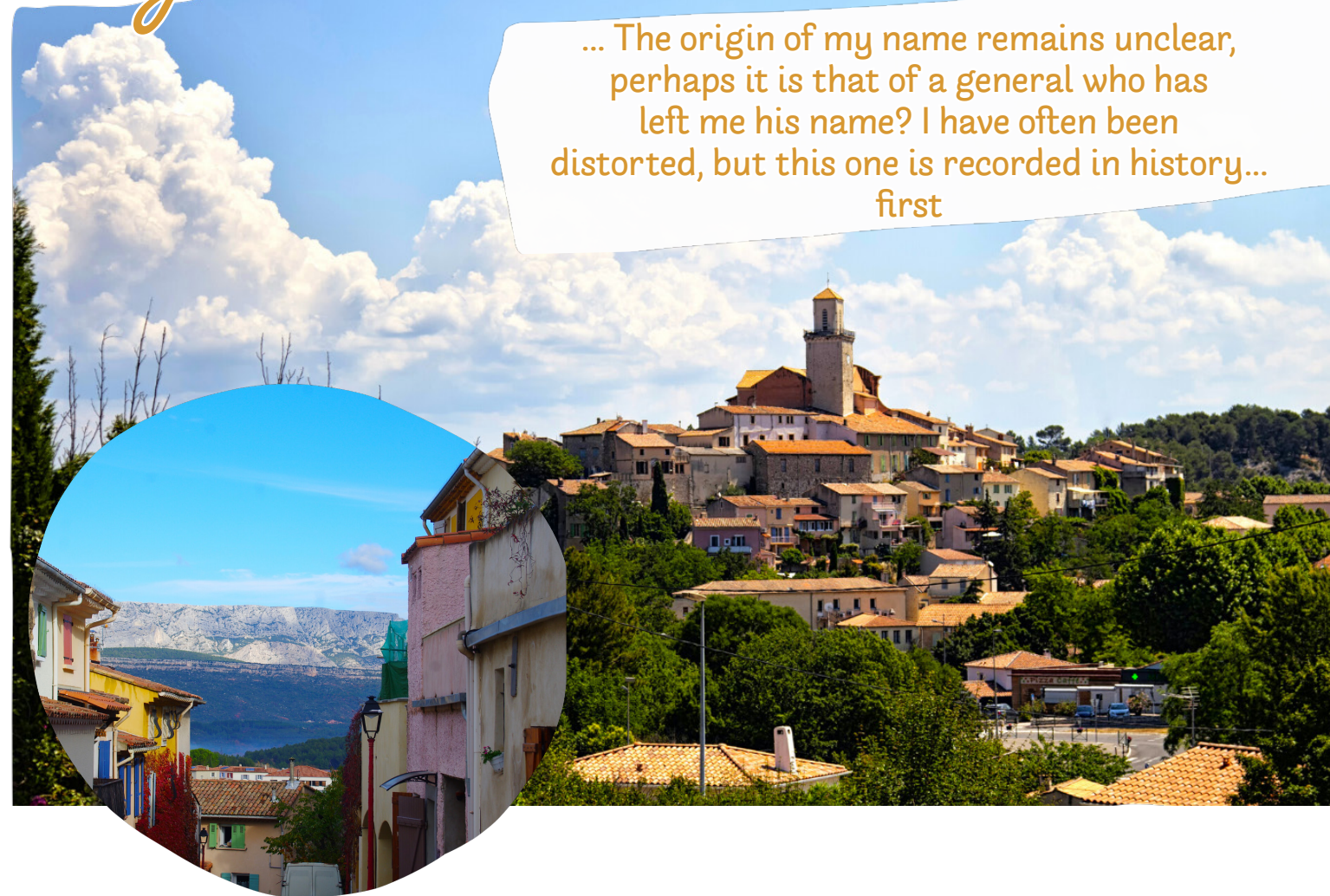
SARL Conception et Aménagement
 de Parcours d'Orientation
 3 Bis rue Jean Monnet
 51500 SILLERY
 Numb : 03 26 08 54 71
www.cap-orientation.com

Production :
 Annick DRUELLE - année 2022
 Photo credit :
 Annick DRUELLE & Ville de Fuveau.
 Cartographe : Matthieu Puech
 Curiosity n° : 91

FUVEAU
 Fuvèu

Ville de Fuveau Enigma...

... The origin of my name remains unclear, perhaps it is that of a general who has left me his name? I have often been distorted, but this one is recorded in history... first



Editorial

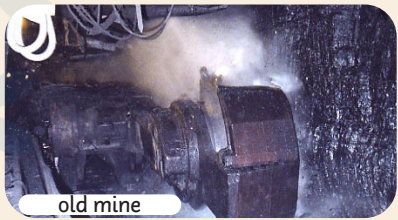
Welcome to Fuveau (Fuvèu in Provençal), With your family, friends or even on your own, explore our beautiful town of Fuveau and go in search of clues about the sites, monuments, districts and parks of our medieval town thanks to this discovery trail. You will constantly be able to appreciate the thousand colours of our beloved Montagne Sainte-Victoire, even from far away. This enigma trail will delight young and old alike. Great moments of sharing and conviviality guaranteed.

Béatrice Bonfillon Chiavassa
 Mayor of Fuveau



CURIQcity
 par CAP Orientation

1 Fuveau, Provence mining basin, Shaft n°1.



old mine

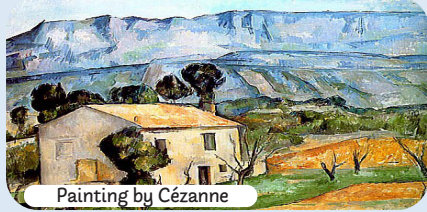
The story begins in the secondary era when the sea covered what was to become the mining basin. After an uplift of the earth 95 million years ago, a freshwater lake was formed, and at the bottom sediments were deposited: they formed the lignite or coal. The anarchic exploitation of this, a quality fuel, called the fuvelien lasted four centuries.

Thanks to the mechanization of the beginning of the 19th century, coal allowed for the first industrial revolution. In the commune of Fuveau, about fifteen wells have been identified and you are here at shaft n°1.

In what year were these shafts permanently closed?

A = 2003 B = 1995 C = 1968

2 Orientation table, panoramic view of the Montagne Sainte Victoire.



Painting by Cézanne

A symbol of Provence, this place offers a unique view of the Montagne Sainte Victoire, "Mount Ventùri" in Provençal language.

This rocky bar culminates at the Pic des Mouches at an altitude of 1011m and is one of the highest peaks in the Bouches-du-Rhône.

In 2004, this site was awarded the "Grand Site de France" label as part of the protection and development of this territory. It also owes its international reputation in part to the paintings by Cézanne.

It is home to many nature lovers. Do you know how far this mountain extends in kilometres?

F = 11 miles long and 3 miles wide.

G = 12 miles long and 2 miles wide.

H = 13 miles long and 3 miles wide.

3 St Michel Church and statue of Joseph Verminck.



This church was built in the 19th century, replacing the former place of worship which was too narrow. The building is grandiose, with an Italian Baroque façade and a neo-Gothic interior.

The large door is not original, on 5th May 1896, a madman tried to set it on fire after spraying the door with petrol.

Opposite this church stands the statue of Charles Joseph Verminck. This Belgian teacher came to teach in Fuveau.

He had 13 children, the eldest of whom, Charles-Auguste, became the founder of the Compagnie Française de l'Afrique Occidentale.

He was a powerful businessman in the cocoa, soap, rubber and peanut trades, but also a generous donor.

Nowadays, CFAO is an international group that is listed on the Paris stock exchange.

Do you know in how many African countries this group is

E = 36 F = 38 G = 39

4 Painters and artists, cinema



Fuveau was an enchanting village for artists. Barthélémy Niollon, born in 1849, was a painter and friend of Cézanne. Several of his works are on display at the Granet Museum and the Orsay Museum. The cinema was also present. In 1940, Raimu played in "La fille du puisatier" by Marcel Pagnol. In 1952, Fernandel played in Henri Verneuil's "Le boulanger de Valorgue". In 1963, it was Paul Meurisse's turn in Marcel Carnés' "Du mouron pour les petits oiseaux".

In this photo, where is the actor Fernandel?

C = Porte du nord.

B = Porte d'Italie.

A = Porte de Bassac.

5 Saint Roch Chapel



In 1720, the contagion of the great plague of Marseille ravaged the region. Fuveau was spared from this evil thanks to Saint Roch who is said to have protected the community of Fuveau. As a protector of animals and plants, and a patron saint and healer of the plague, he is celebrated throughout the world. In 1729, Honorat Jourdan, consul, had this chapel built in his name.

What is the scene painted in this picture in the chapel?

V = The consul's family at prayer before the saint;

W = A visit of Saint Roch in 1360, in Provence.

X = A blessing from Saint Roch at a baptism.

6 Old washhouse and water



Washerwoman

This washhouse dates back to 1873 and enabled women to wash their clothes in better conditions until 1968. Thanks to hydraulic pumps installed in an underground gallery, the washhouse was fed by the water from the ground water that flooded the mine shafts.

This water was collected at the exit of the Gallery and pumped up into a huge cistern located under the Verminck square, where it supplied several fountains.

With the closing of the mines, water was less generous, and was supplemented by adductions from the open-air Canal de Provence.

In what year will the water from the Canal de Provence, which is inexhaustible, serve the networks

C = 1978 D = 1981 E = 1985

10 Saint Michel's Chapel and dovecote



At the end of the 10th century, the Earls of Provence drove out the Saracens and life gradually returned to Provence.

Several small communities of monks established priories which provided religious services. In Fuveau, the Romanesque chapel of Saint-Michel dating from the 11th century remains as a trace of this past. Architectural details testify to the many alterations made to the building throughout its history. The area around this chapel was used as a cemetery until 1742.

The dovecote (in reality) is an old windmill, as evidenced by its parapet walk. The upper part was blown off by a hurricane in 1839.

It was transformed into a dovecote by Charles Verminck.

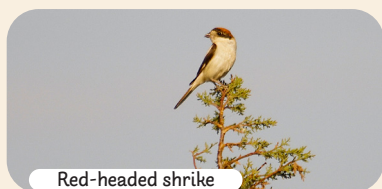
What did this mill produce?

? = Olive oil.

I = Wheat flour.

S = Lavender oil.

9 Peasant miners and biodiversity



Red-headed shrike

The miners, owners of gardens or vineyards, went to maintain them after work, a much-needed additional activity for their finances. The cessation of these activities has modified the landscape and allowed the fauna and flora to settle there. A biodiversity atlas has been created to allow the commune to better understand its natural heritage and thus better protect this wealth. Fuveau is part of this process, and this report shows that many remarkable species have been identified on the territory, including the red-headed shrike, the ocellated lizard, the southern tree frog, and the Provence ophrys.

Drought, wind, a cigarette butt, a strong human presence are major causes of fire in these territories. Do you know how many fires start in this county each year?

K = 250 L = 280 M = 300



8 The miners district



The job of the underground miner was a job of suffering, sacrifice and struggle. About 400 men left every morning at 5:30 a.m. on the miners' train to go to their work site 7 km away. When the train returned at 5pm, it was impossible to identify them under the blackness of their faces and clothes. They lived meagrely, but little by little their life will improve thanks to free medical care, housing allowances that will give them access to these houses facing you. Until the liberation of France, it was necessary to fetch water from the fountain, but despite this lack of convenience, these houses were very well kept by the women.

They spent their afternoons doing embroidery or crochet, but their favourite activity was stringing beads, what were they making with these?

S = Jewellery for the local bourgeoisie.

T = Some boxes for drying herbs.

U = Some roses for funeral wreaths.

7 Traditions, culture and festivals of Provence



Traditions and folklore, traditional festivals in Fuveau are part of the cultural life of the village. The Saint Eloi Cavalcade, the Writers' Fair, the Saint-Michel agricultural fair, the Goat and Honey fair, the St. John's Day bonfires for 200 years, the theatre festivals, historical shows. Every year in January, the members of the Cercle Saint Michel de Fuveau bring back to life a living version of the Provençal cots of the 19th century, a journey back in time...

This pastoral practice is very well known in the region as it has been performed at the Saint-Michel theatre since 1880. There are 45 actors who perform this play in five acts and in Provençal language. What is its name?

K = The Nativity Scene

L = The Maurel pastorale

M = The shepherd's pastorale

Enigma

... The origin of my name remains unclear, perhaps it is that of a general who has left me his name? I have often been distorted, but this one is recorded in history... first

1	2	3	4	5	6	7	8	9	10
---	---	---	---	---	---	---	---	---	----